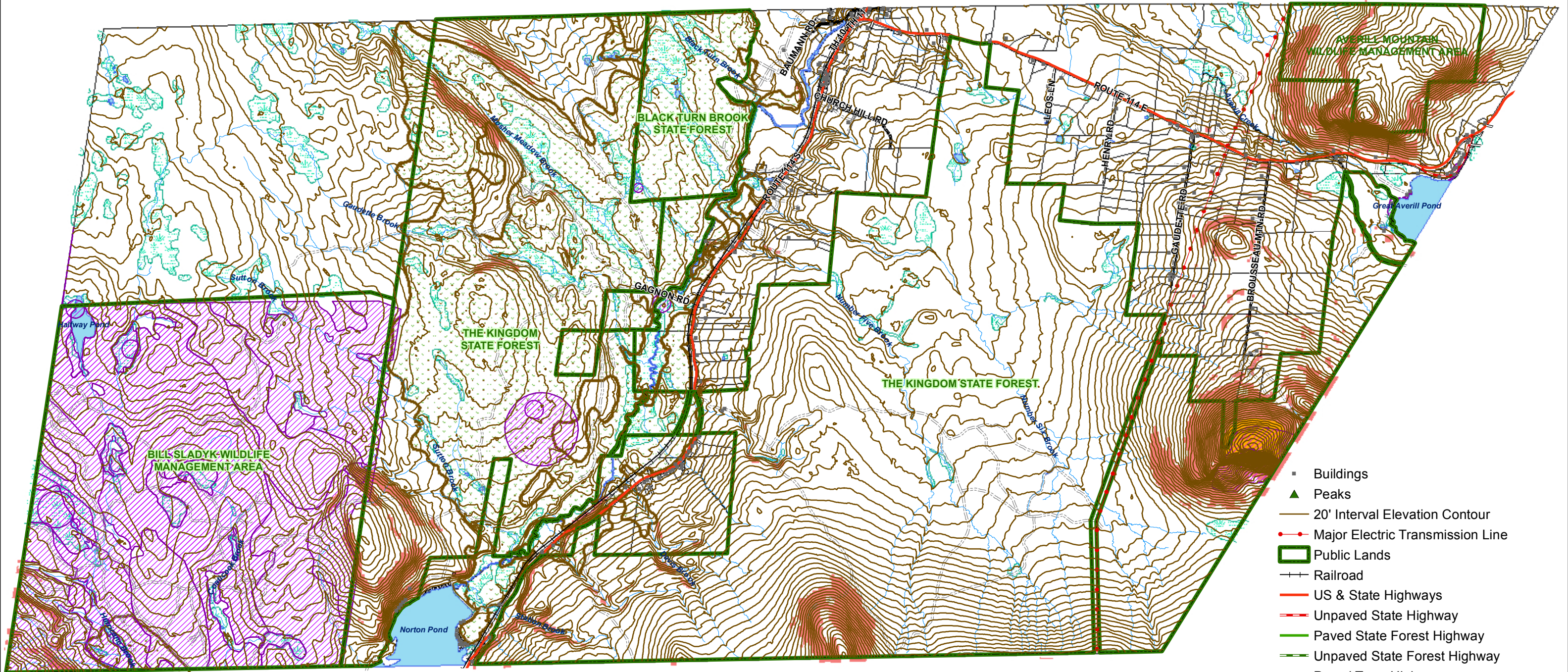




Town of Norton Natural Resource Constraints Map #3

03/20/2014



- Buildings
- ▲ Peaks
- 20' Interval Elevation Contour
- Major Electric Transmission Line
- ▭ Public Lands
- +— Railroad
- US & State Highways
- Unpaved State Highway
- Paved State Forest Highway
- Unpaved State Forest Highway
- Paved Town Highway
- Unpaved Town Highway
- ==== Unpaved Class 4 Town Highway
- Legal Trail
- Unpaved Private Road
- Streams
- ▨ Threatened/Endangered Species/Habitat
- ▨ Deer Wintering Areas
- Lakes, Ponds & Rivers
- ▨ Wetlands
- ▭ Parcel Boundaries - 2003
- Areas Over 2500' in Elevation
- Steep Slopes over 20%

Warning- This Data is for planning purposes only and does not replace a survey and/or engineering study. Because this map is developed from various scale sources, there may be some discrepancies between data layers.

